

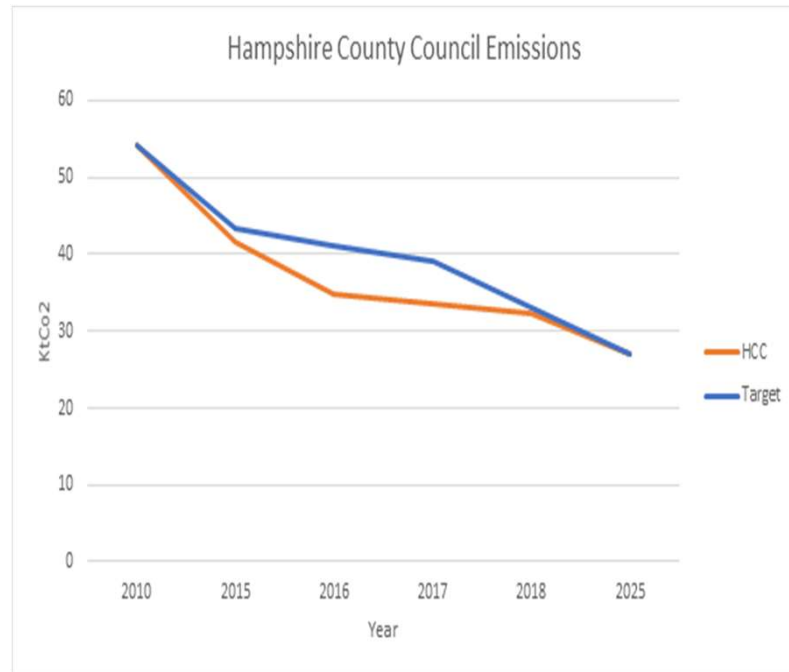
Update on Climate Change Strategy and Action Plan

Policy & Resources Select Committee
5th March 2020

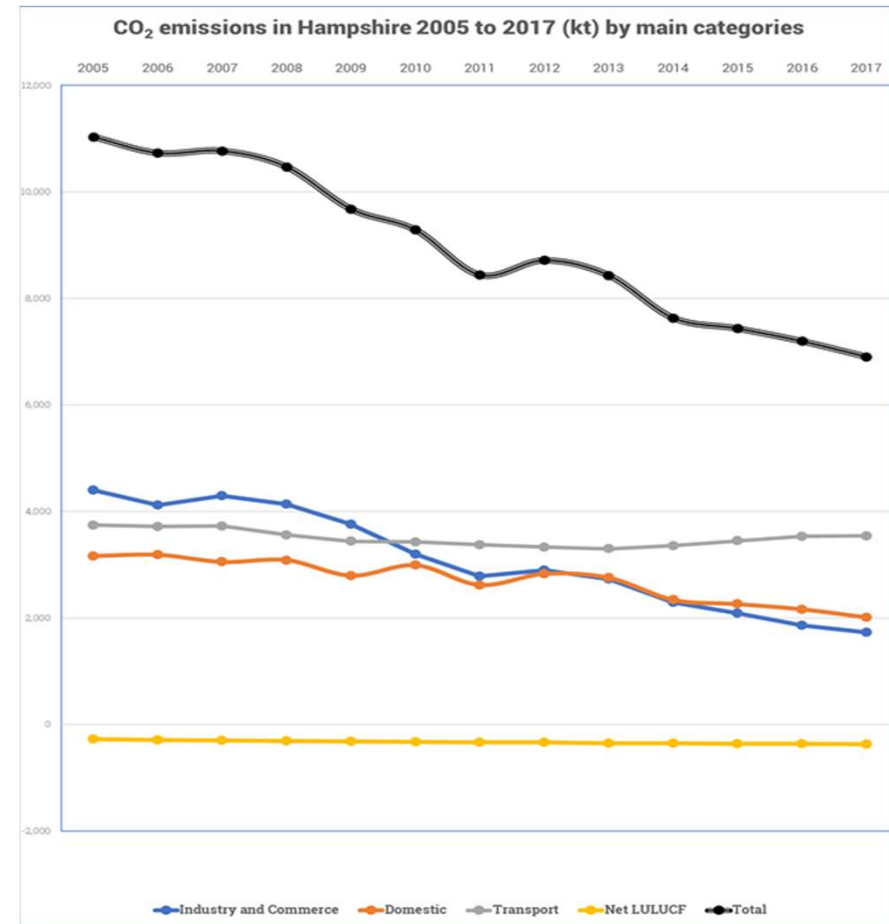
Stuart Jarvis, Director ETE

Chitra Nadarajah, Strategic Manager Climate
Change

Current Emissions



HCC's emissions represent only about 1% of the total Hampshire emissions. This is where our focus must be moving forward



New Targets & Scope



Scope 1 - direct emissions from owned or controlled sources. Scope 2 - indirect emissions from the generation of purchased energy. Scope 3 - all indirect emissions that occur in the value chain of the reporting company, including both upstream and downstream emissions



Target: Carbon neutrality by 2050 for the County Council's own estate and extending the target to include wider indirect emissions i.e. moving from Scope 1 to Scope 1-3 for HCC



Target: Carbon neutrality by 2050 for the wider Hampshire area which aligns with national government target – i.e. Scope 1-2



Target: Build resilience to impacts of a two-degree Celsius rise in temperature.

Carbon Trust - Baseline & Budget



Carbon Baseline Budget - using BEIS Business-as-Usual projections, calculate carbon budget – i.e. total emissions allowable whilst remaining within 1.5 °C limits. From this, 5 year budgets are set against which progress can be created.



Scenario Modelling - cost and benefits of each scenario, and the gap against current pipeline of projects.



Engagement – internal and external stakeholder engagement throughout resulting in a broad range of policies/projects and ideas across **mitigation and adaptation** – as well as potential owners – mapped against budget



Monitoring - user-friendly tool for HCC to track impact of decarbonisation interventions against baseline (including user training session) & enable development of **Impact Assessment Tool**.



Hampshire
County Council

Policy Review & Engagement

As an organisation our strategies and policies drive action and in order to ensure that everything we do takes account of climate change we must ensure it is embedded into BAU.



Review of all HCC policies and strategies in 2-5 years to drive action on climate change across all our services and partnerships



Review the Local Transport Plan, Health and Wellbeing Board Business Plan, Local Flood Risk Management Strategy, County Farms Estate, HR and Procurement Policies



Using digital as an enabler to reduce carbon emissions across HCC and our partners, for example working with health service providers to reduce the need to travel to clinics



Working with Districts and other public sector partners to ensure collaboration and sharing of expertise, opportunities for joint projects



Engagement with a wide range of stakeholders including Community Groups like Extinction Rebellion, Friends of the Earth, Winchester Action on Climate Change



Hampshire
County Council

Current /Planned Activity - HCC Estate



Establish a Salix De-carbonisation Fund of £1million to fund a range of energy saving initiatives on the County Council's corporate built estate, including solar PV for schools



Purchasing certified green energy where it can be guaranteed that more renewable energy sources will be purchased, moving towards carbon neutral by 2025



Transitioning more vehicles to electric, including ETE, and Land Survey vehicles



LED lighting and PV to extend to care homes, ETE depot buildings and street lighting. ETE depots to also have grey water recycling



HC3S will be increasing the plant-based menu at Ell court canteen and wider services, including schools



Hampshire
County Council

Current /Planned Activity - Transport



Review of Local Transport Plan provides a significant opportunity to increase journeys made using sustainable travel modes and reduce car dependence (Transport)



Transforming Cities funding to create better public transport walking and cycling infrastructure in and around Southampton and Portsmouth. This will include delivering Bus Rapid Transit, ticketing schemes and transport interchanges (Passenger Transport)



Pilots on walkable streets by separating cycleways and footpaths from roads, and crafting corridors of trees to filter pollutants from vehicles, resulting in more health benefits from active travel and better air quality from reduced emissions (Planning, Public Health)



Reducing emissions in delivering services through encouraging less travel within Adults' Health & Care by booking service users and carers into community hubs and having community transport for vulnerable older people (Adults Health and Care)



Ensuring our highways network is resilient to the impacts of climate change by identifying high risk areas for flooding and tree fall and ensuring a quick response (Highways)



Reducing emissions and improving air quality through traffic control (Highways)



Hampshire
County Council

Current/Planned Activity – Innovation/Engagement



Fuelling innovation and the circular economy by using recycled plastic for street furniture and using recycled asphalt pavement and base materials from waste for use in the highway network (Highways)



Promote low carbon technology – e.g. by changing suitable hot binder course materials to 'cold lay' for use on the highway network. (highways)



Whole system carbon assessment for waste undertaken (e.g. transport, waste disposal, recycling etc.) highlighting need to focus on reduction in residual waste for future system modelling (Waste)



Promoting sustainable food by developing a 'Hampshire eating out healthily' award which will prioritise locally sourced food and highlight businesses that provide this (Public Health)



Ambassadors of Climate Change will be identified for Children's Homes and foster carers to change shopping habits in order to reduce food waste (Children's services)



Hampshire
County Council

Current/Planned Activity – Natural Environment



Pilot climate positive country park to include rewilding and carbon sink creation



Programme of tree and wildflower planting on highways amenity land, funded by ringfencing 100% of capital receipts from sale of surplus highways land



Wildflower planting on highways grass verges in partnership with Plant Life



Tree Strategy and Strategic Alliance with Forestry Commission & Woodland Trust



Improve resilience to climate change by protecting and creating new native habitat, ensuring habitat connectivity and quality to facilitate species adaptation and the absorption of more flood water and carbon



Hampshire
County Council

Next Steps



Establish a Carbon Budget and Adaptation Pathway to 2050



Strategy and Action Plan published in Summer 2020 including “pioneer” programmes



Behavioural Insights led approach to Marketing & Communications, new Climate Change Website



Roll out of Greening Campaign to all Town & Parish Councils and local communities